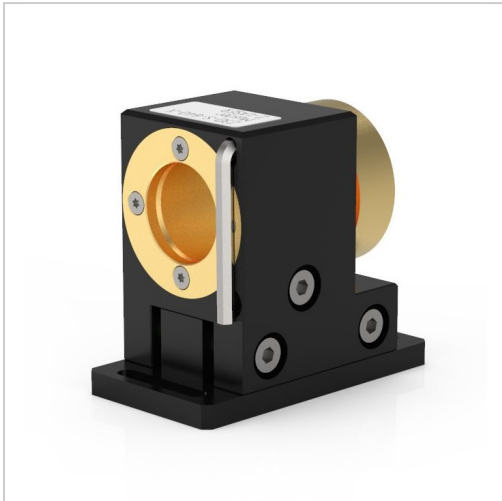




Precision mount for lasers with $\varnothing 20\text{mm}$ housing diameter H6-20



Z-LASER

An Exaktera Company

320,00 €

Prices excl. VAT plus shipping costs

Art nr.: **XZL100180601**

Material: Aluminium, black anodized

Dimensions (WxHxD): 35 x 57 x 65mm

Functions:

- Roll laser around the longitudinal axis (360°)
- Move laser parallel to the transverse axis ($\pm 4.5\text{mm}$)
- Yaw laser around vertical axis ($\pm 5^\circ$)

